

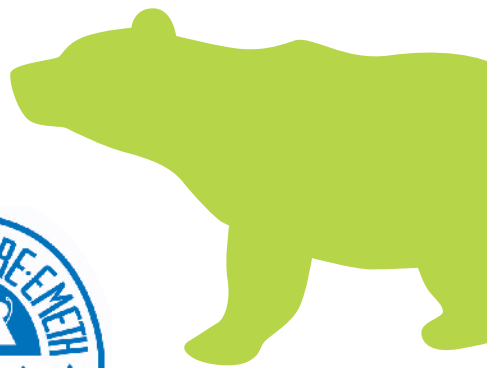
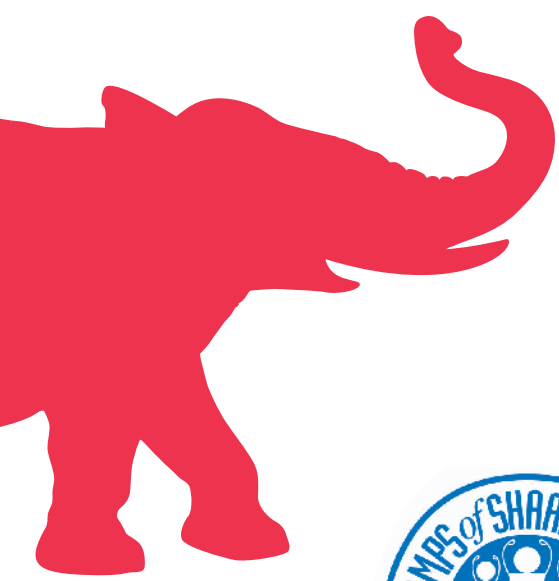
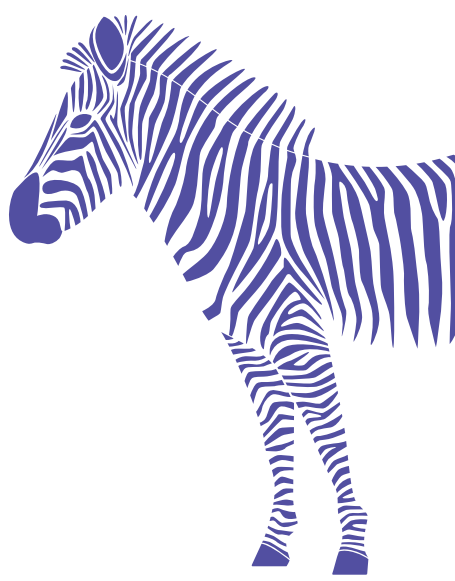


CAMP MICAH

JUNE 11-JULY 20, 2012



A Jewish day camp
for children ages
1 year through
Pre-Kindergarten



A camp of Congregation Shaare Emeth and the Shirlee Green Preschool

CAMP MICAH is a fabulous first camping experience for Preschool age children. Our goal is to provide a unique opportunity for children as they discover friendships, Jewish heritage and the world around them, within the setting of a warm, nurturing environment.

OUR STAFF Our highly qualified and experienced adult and teen staff help create a meaningful, exciting program of developmentally appropriate activities consistent with the Shirlee Green Preschool philosophy.

ACTIVITIES We believe in traditional camp activities while exploring our rich Jewish customs. Each Friday our campers enjoy a community Shabbat celebration, after a week full of activities based on a Jewish theme. Our theme is explored through indoor/outdoor play, music, art experiences, water play, science and our “Wonderful Wednesdays”. when children participate in: Israeli Dancing, Gymnastics, Pony Rides, Storytelling, Cooking and Puppet Shows.



we create art



we play outside



we sing and dance

we explore nature



we celebrate shabbat



we love water play

WHERE AND WHEN We are located within the Shirlee Green Preschool on the campus of Congregation Shaare Emeth. Camp Micah takes place June 11 – July 20, 2012 from 9:15 am until 12:00 pm. We provide a six-week camp experience; however, if you have a family vacation planned during this time, please let us know so we can be flexible for you! Call for details about our optional afternoon enrichment and Mini-Camp programs too!

QUESTIONS? For more information, please call the office at 314-569-0048 or email Cheri Winchell, Director of Early Childhood Education at cwinchell@shaare-emeth.org or Beth Kodner, Camp Micah Program Director at bkodner@shaare-emeth.org.



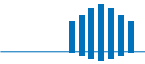
11645 Ladue Road
St. Louis, MO 63141
314-569-0048

www.shaare-emeth.org

Cheri Winchell
Director of Early Childhood Education
Shirlee Green Preschool
cwinchell@shaare-emeth.org

Beth Kodner
Program Director of Camp Micah
bkodner@shaare-emeth.org

CONGREGATION



SHAARE ■ E M E T H

Founded in 1867

REGISTRATION POLICIES

Once Registration begins, it is open exclusively to current Preschool families for two weeks. Registration is then opened to Shaare Emeth members for two weeks prior to opening to the public.

All families of students enrolled in the preschool must be current in their financial obligation to the preschool.

Shaare Emeth member families must be current in their financial obligations to the Congregation, including Membership Responsibility, Building Fund and any other charges. An approved payment plan will satisfy this requirement.